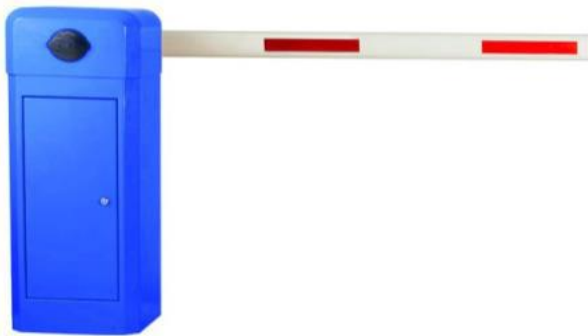




MODEL: WSTP-115 - BY WONSUN.

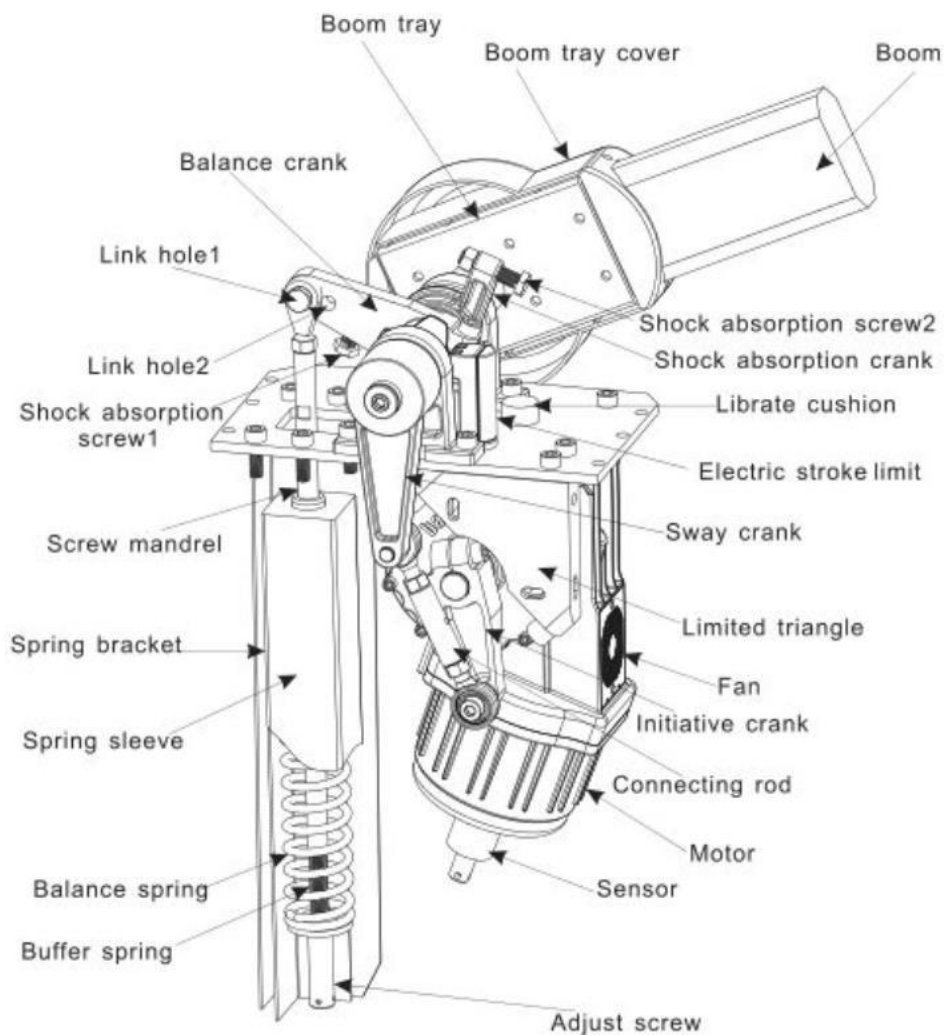


POWER SUPPLY	230V / 50 HZ OR 110V
ELECRTC MOTOR	SINGLE PHASE BI-DIRECTIONAL
ABSORBED POWER	220W
ABSORBED CURRENT	1 A
THERMAL PROTECTION ON MOTOR WINDING	120 °
OPERATING TEMPERATURE	-20 TO +55 °.
BODY TREATMENT	CATAPHORESIS
COLOUR	POLYESTER RAL COLOUR
PROTETION CLASS	IP 54
DIMENSIONS	320 X 280 X 935 MM
MATERIAL THICKNESS	BLUE / GREY / ORANGE
OPENING /CLOSING TIME	0.6 SECS FOR BOOM UPTO 2.5 MTRS. 1 SECS FOR BOOM UPTO 3 MTRS 3 SECS FOR BOOM UPTO 4.5 MTR. 6 SECS. FOR 6 MTR.
BOOM PROFILE	ALUMINIUM HOLLOW PROFILE RETRACTABLE TYPE FOR 6 MTRS. [SPLIT TYPE] NORMAL STRAIGHT BOOM FOR 6 MTS

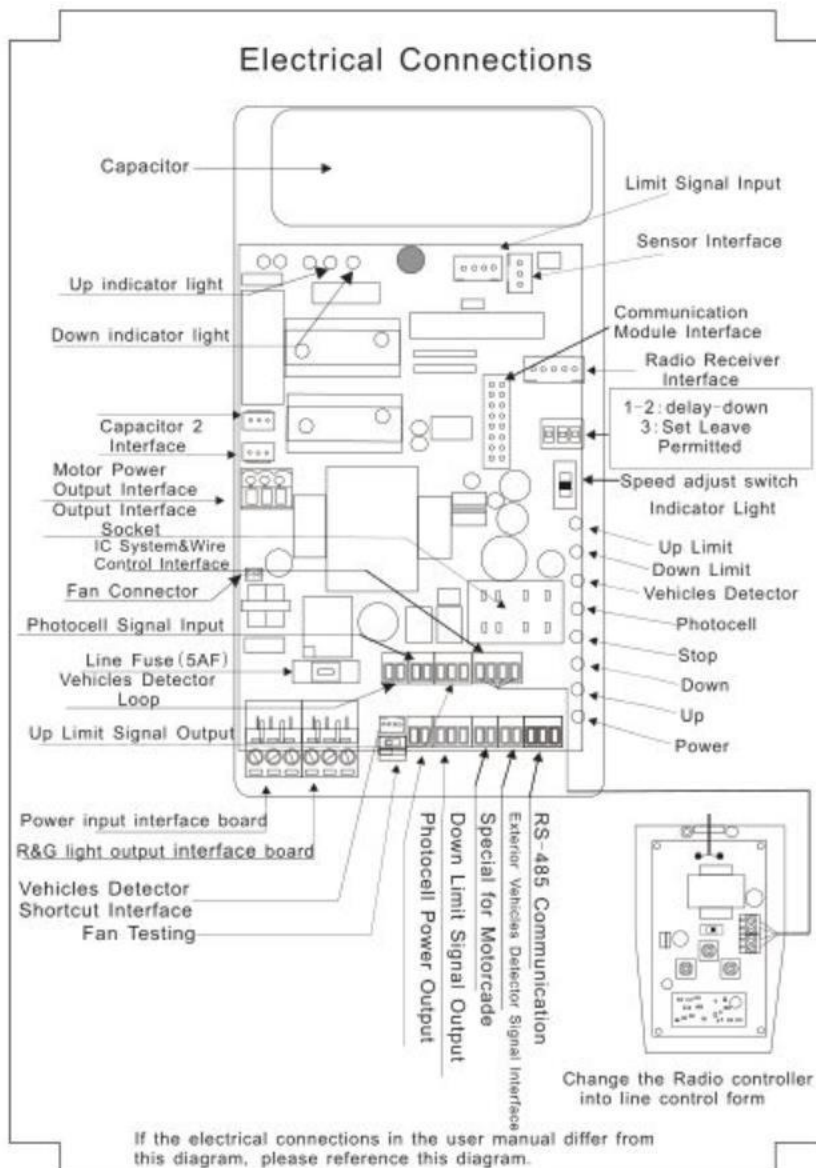
ADDITIONAL FEATURES:

1. Special designed machine core with heavy duty compression spring.
2. Manual release in case of power failure.
3. Die-casting aluminium alloy motor.
4. Motor cooling fan for heat protection.
5. Double safety limit switches.
6. Electronic deceleration, patented.
7. Torque motor, steady, low noise.
8. Silent, heavy duty ,steady and durable

MACHINE CORE:



CONNECTIONS OF ELETRIC PARTS:



OPTIONAL ACCESSORIES SUPPORT:

1. PHOTOCELLS.
2. FLASHING LIGHT.
3. REMOTE.
4. LOOP DETECTOR.
5. RS 485 INTERFACE.
6. REST POST